

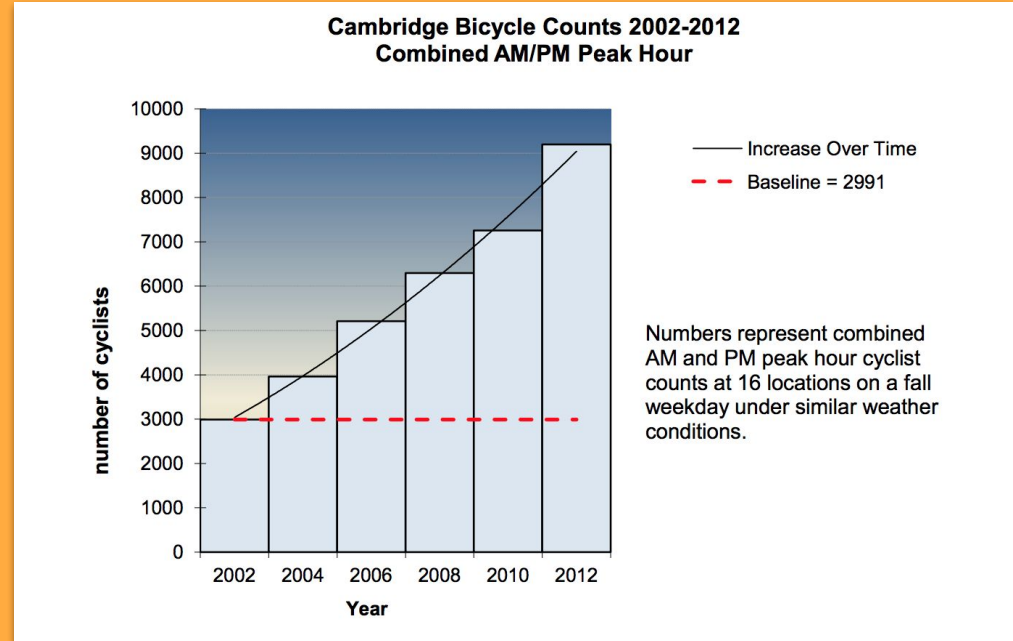
# Bicycle Safety for School Bus Drivers

---

*Created for the City of Boston by  
LivableStreets Alliance and MassBike*

# Why Bikes?

Bicycle usage is on the rise in Greater Boston, and **new types of infrastructure mean new ways of navigating our streets safely.**



# Who is Riding

Many more young people + older adults riding bikes.

**These groups are extra vulnerable when riding their bikes.**



# Safe Routes to Schools

Federal and state programs are expanding to encourage students to bike to school. Children are likely riding around school bus pick up and drop off times, and may be inexperienced bicyclists, more unpredictable, and harder to see by drivers.

# Who are Vulnerable Road Users?



People using the street who are not in cars are **vulnerable road users**. This term includes everyone from wheelchair users, people on scooters, bikes, and skateboards, to pedestrians, and more.

# Safety



Photo by: David L Ryan/*Boston Globe*

Many people killed while riding bikes in Greater Boston have been due to **crashes involving drivers of buses and trucks.**

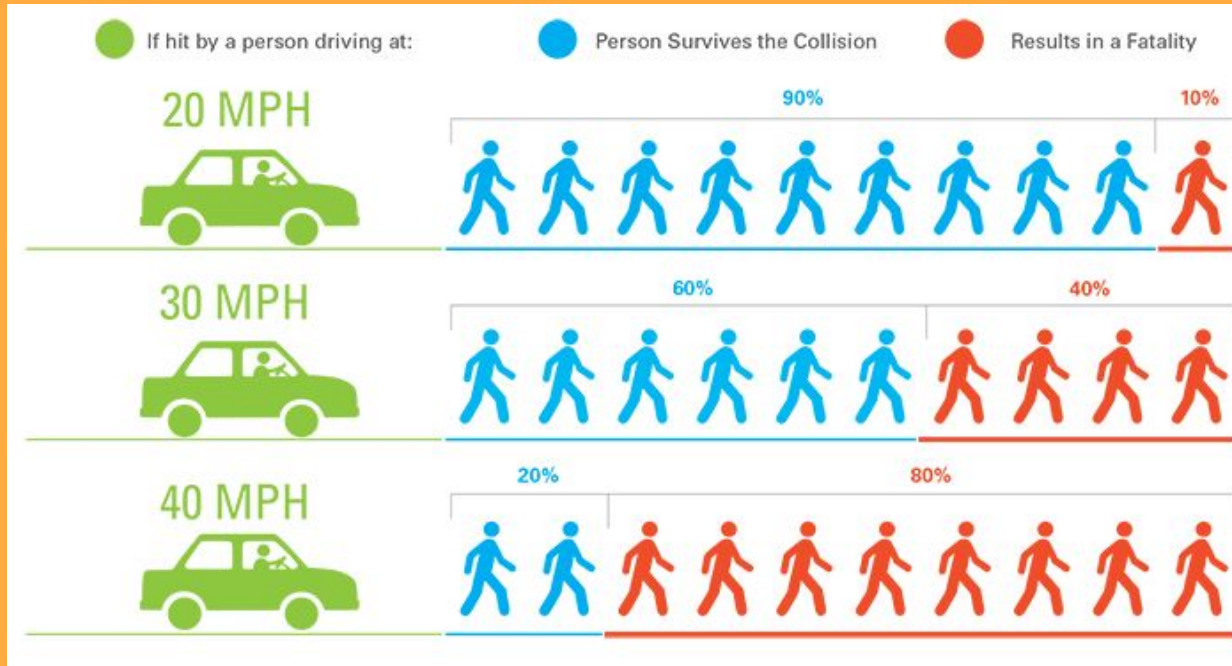
# Vision Zero + Street Safety

**This is an initiative across the state to eliminate traffic fatalities.**

Due to this, the speed limit has been lowered in many cities and towns across the state.

**When in doubt, drive 20 mph!**

# Vision Zero



The speed a vehicle travels is directly related to the likelihood of fatality in the event of a crash.

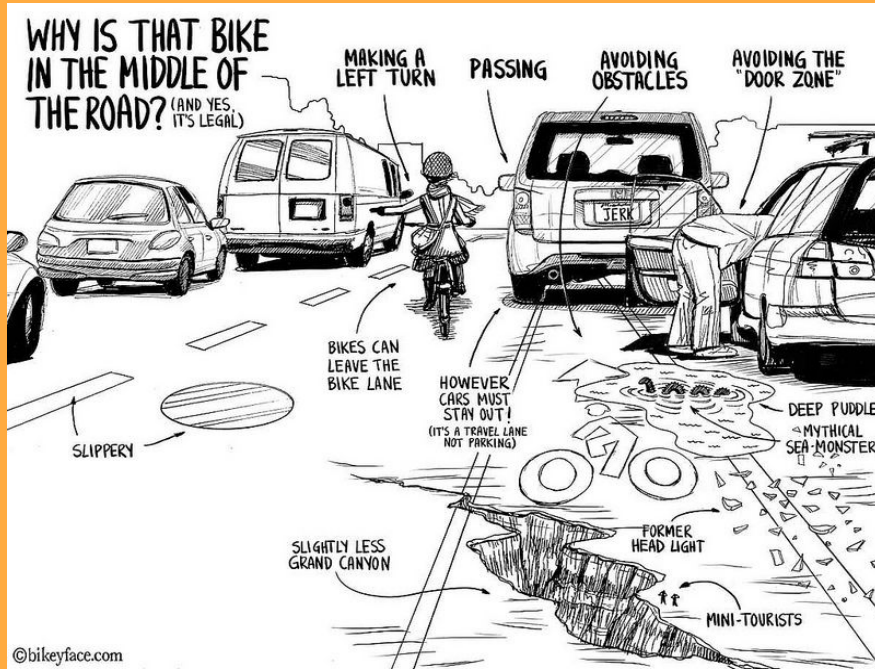
Going the speed limit matters!



# Safely Interacting with Bicycles

Existing with people biking on the road is a partnership. Here are some tips and examples of when to be extra aware of people on bicycles.

# The Bike Rider's Perspective



Drivers should always consider the bicyclist's perspective when deciding how to navigate around them.

Give at least 4 feet of space when passing and remain at 2 cars length, or 40 feet, behind.

**Be ready for unpredictable behavior from a person a bike.**

Cartoon by: bikeyface.com

# Biggest dangers for people biking in traffic

1. **“Right Hook”**: Struck by right side of vehicle when drivers are turning or pulling over to side of the road
2. **“Left Hook”**: Left turning drivers not yielding at intersections
3. **“Dooring”**: Struck by opening door when passing parked vehicles
4. **“Close Passing”**: Getting squeezed by passing driver

# Sharing the right side of the road

When doing pick up and drop off along your bus route, you and people biking are sharing the same space along the curb, and perhaps into a bike lane.

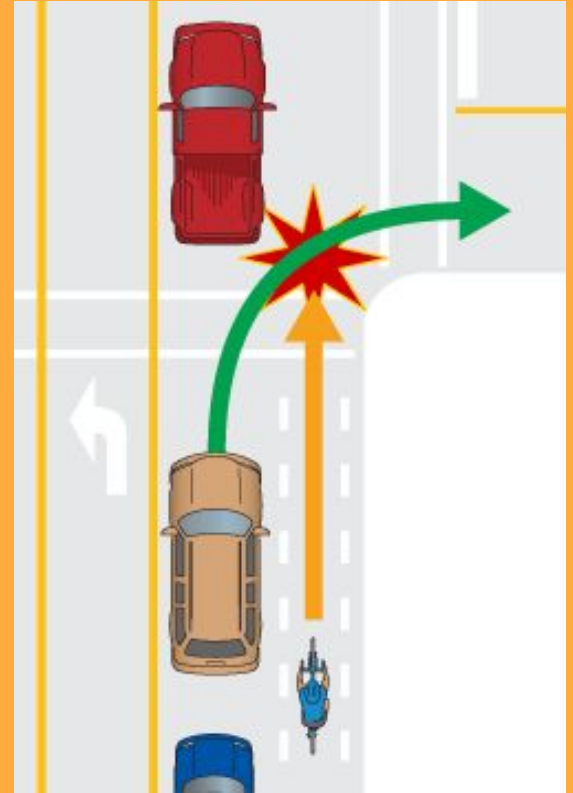
**Be mindful that bikers may occupy the space where you need to pull over.**

Ensure to ALWAYS check mirrors and blind spots and use your signals when stopping or moving to the curbside - and again before opening doors and letting students on or off.

# Right Hook: Turning + Intersections

**Always yield to people riding straight through the intersection.**

When approaching an intersection, stay behind the person riding their bike to avoid the dreaded "right hook."



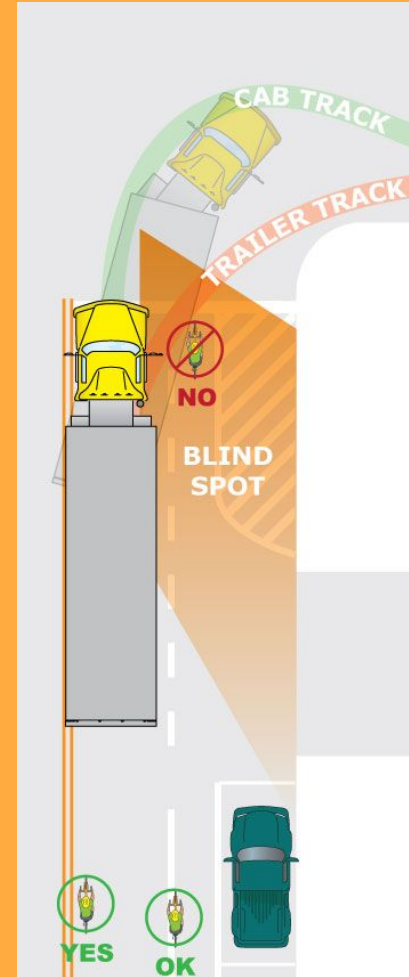
# Left Hook: Turning + Intersections

When turning left, look out for oncoming bikers closer to the curb.

Watch out! **Oncoming traffic may be blocking your sightline of people biking.**

# Blind Spots

People riding bicycles may not be aware of the **blind spots** of school buses. Make sure to communicate with signals, and to have properly adjusted mirrors to increase visibility next to the vehicle.



# Safe Following Distance

For every 10 mph you drive,  
make sure to leave 1 additional  
vehicle length in front of you.

**Especially when following  
people biking.**





# Safe Passing Distance

State law requires **motorists to provide at least 4 feet of space** while passing people on bikes.



**Motorists must give**  
**4 feet to pass**  
**It's the law!**



# Door Zone Danger!

People may be riding bicycles closer to the middle of the road in order to avoid being “doored” by people leaving parked cars.



Photo by: @bostonbiker

# What to Expect from People Biking

Bicycles share the same right to any part of the road under Mass State Law, meaning you should expect them to ride in the middle of the lane so please provide them space to navigate safely.



# What to Expect from People Biking

Hand signals people biking may use

**People on bikes are only able to signal when it is safe to take their hands off their handlebars.**

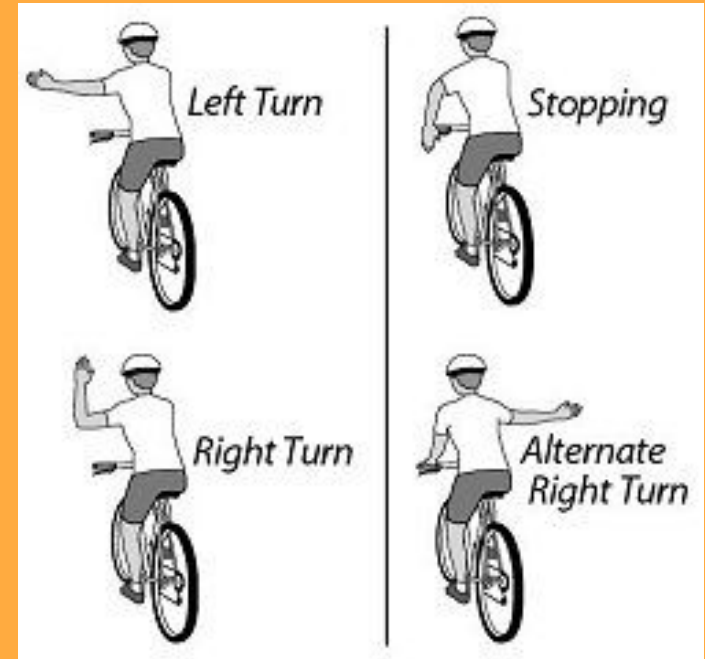


Photo by: British Columbia Cycling Coalition

# Bikers Behaving Badly

Remember **safety is the primary objective.**

Even if people on bikes are not acting in ways that are safe, it's still important to be careful.



Graphic by: Mark Alan Stamaty

# How to make people on bikes feel safer

1. Pass with at least 4 ft of space
2. Always check mirrors/blind spots, especially when turning and before opening doors
3. Be patient and kind! It's OK to stay behind and give bikers space and slow your speed